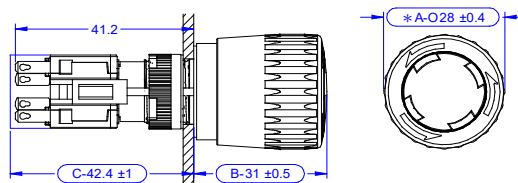
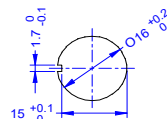


型號 • Model: ADA16E6-R11-(1)1(2)(3)



Mounting Hole



目錄僅供參考，實際規格仍依確認書為準。

項目 • Items		規格 • Specifications
產品規格 • Product specifications	額定絕緣電壓 (Ui) • Rated insulation voltage	300V
	額定通電電流 (Ith) • Thermal current	8A
	額定使用電壓/電流，AC-15 • Rated operational voltage / current	125V/3A，250V/1.5A
	額定使用電壓/電流，DC-13 • Rated operational voltage / current	125V/0.22A，250V/0.11A
	防護等級 • Degree of protection	IP 65
	使用周圍溫度 • Operating temperature	-25°C ~ +70°C (-25°C ~ +55°C with lamp)
	儲存溫度 • Storage temperature	-40°C ~ +85°C
	環境濕度 • Ambient humidity	45%~85% RH
	接觸阻抗 • Contact resistance	50 mΩ
	絕緣阻抗 • Insulation resistance	100 MΩ
	耐電壓 • Withstand voltage	1500V 60Hz 1 minute
	機械壽命 • Mechanical lifetime	100,000 cycles
電氣壽命 • Electrical lifetime	50,000 cycles	
操作/安裝信息 • Operating/install information	產品系列 • Product series	ADA16 series
	產品操作類型 • Product operation type	緊急停止開關 • Emergency Stop Switch
	功能 • Function	按壓鎖扣-旋轉解鎖 • Pushlock turn to reset
	操作部特徵 • Shape & Bezel	外型:圓錐形 φ 30mm, 頭高30 mm • Shape: Tapered φ 30mm, High: 30mm
	(1)接點數量 • Contact configuration	(H):1NC+1NO ; (I):1NC/1NC ; (G):1NC
	(2)照光 • Lamp	未安裝 • Without :(0) ; LED lamp:(H)(J)(K)(K1)(P)(Q)(R)(S)(T)(U) ; 白熾燈 • Incandescent:(A)(B)(C)(D)(E)(L)(M)(N) ; Neon lamp:(F)(G)
	(3)顏色 • Color	(R):紅 • Red
	安裝孔徑 • Mounting Hole	∅ 16.2 mm
	面板厚度 • Panel thickness	0.5 ~ 5 mm
	產品尺寸(H)高×(W)寬，(D)深 • Product dimension	(H)28 mm × (W)28 mm，(D)73.4 mm
端子形狀 • Terminal type	w 2.8 × t 0.5 mm	
認證 • Approval	認證標誌 • Approval marking	TUV
	認證標準 • Approval standard	EN 60947-5-1 ; EN 60947-5-5
	RoHS	符合規定 • Compliant
	接點部材質 • Contact configuration material	Housing: PA9T / Contact: silver alloy with Au plated / Terminal: phosphor bronze with Au plated