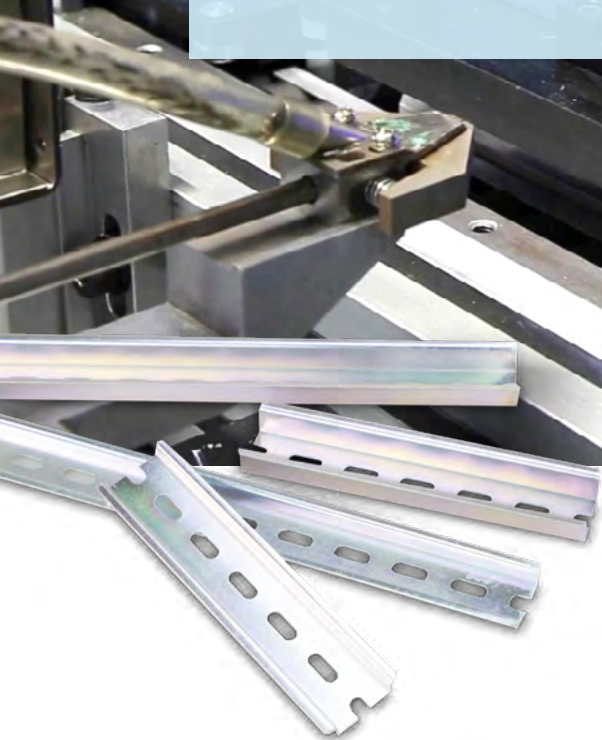
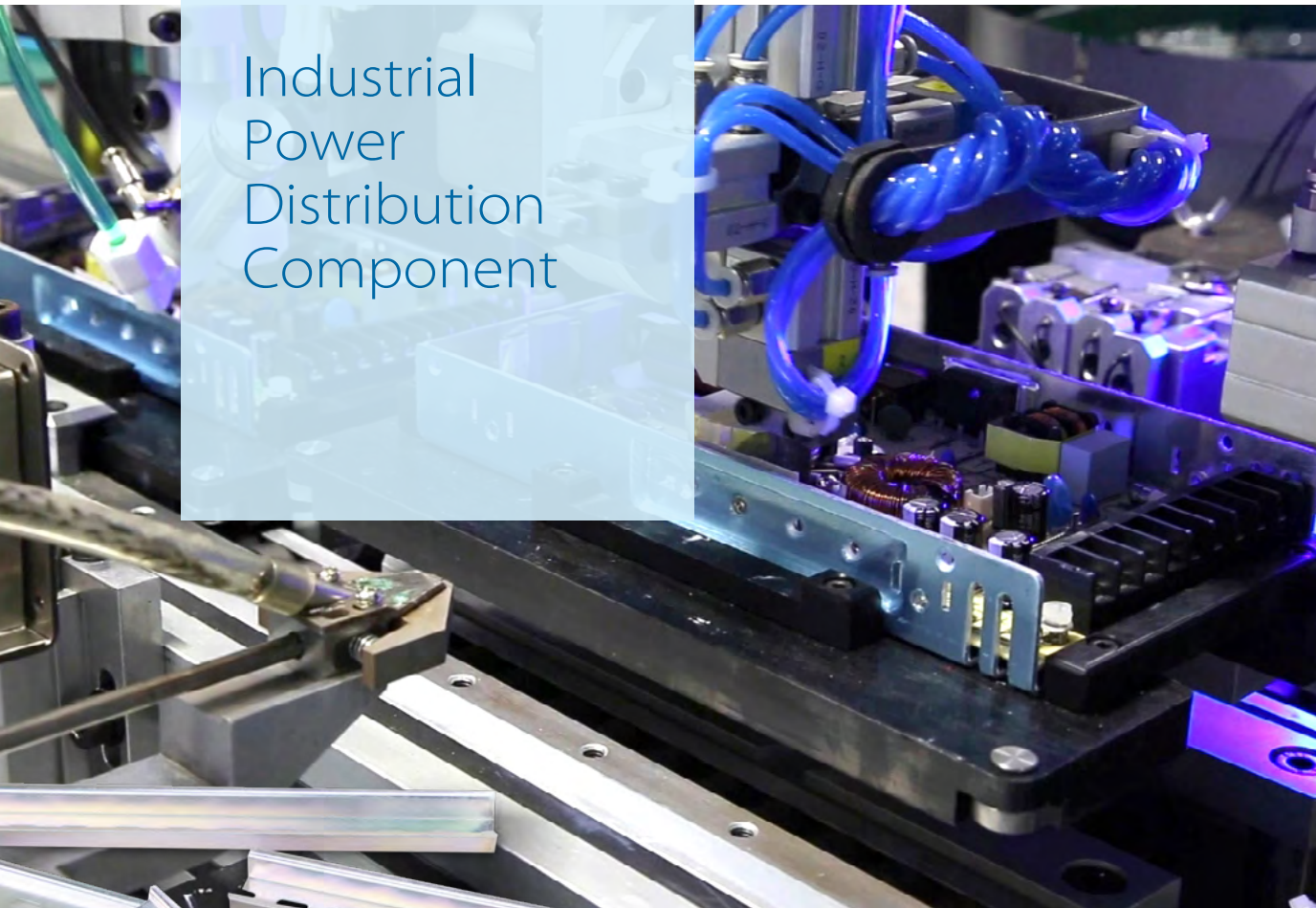


Industrial Power Distribution Component



Grounding Copper Busbar

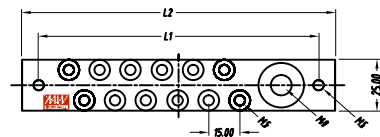
Features excellent conductivity, corrosion resistance, structural stability, easy installation and maintenance, as well as diverse sizes and specifications, ensuring the safe operation of equipment and system stability. Its function is to introduce the current in the system into the ground through grounding equipment, reducing leakage current and contact voltage to protect user safety. The maximum withstand current of the product is 250A for the double-row type, with material made of tin-plated red copper and fixing seat material of PA66, all meeting ROHS environmental requirements. Manufactured in Taiwan, it can be applied in factory equipment, building construction, commercial applications, transportation, energy systems, and more.

Features

- Excellent conductivity material and superior corrosion-resistant surface
- Diverse sizes and specifications can meet various installation applications and requirements
- Material of support insulator:
6410G5 PA66 flame retardant (NAN YA PLASTICS CORP.), UL 94 V0 grade
- Number of poles: 5P, 7P, 9P, 11P, 13P, 15P, 17P, 19P, 21P, 23P, 25P, 27P



Illustration (dimension) ►

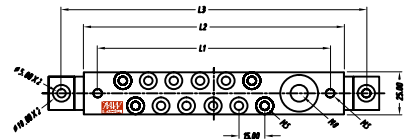


Part No.	Hole Spacing L1 (±2mm)	Total Length L2 (±2mm)	Copper Busbar Size W: width (±2mm) T: thickness (±0.2mm)	Maximum Current (Max.)
CU25003T-005	75mm	91mm	25W x 3T mm	250A
CU25003T-007	90mm	106mm		
CU25003T-009	105mm	121mm		
CU25003T-011	120mm	136mm		
CU25003T-013	135mm	151mm		
CU25003T-015	150mm	166mm		
CU25003T-017	165mm	181mm		
CU25003T-019	180mm	196mm		

Part No.	Hole Spacing L1 (±2mm)	Total Length L2 (±2mm)	Copper Busbar Size W: width (±2mm) T: thickness (±0.2mm)	Maximum Current (Max.)
CU25003T-021	195mm	211mm	25W x 3T mm	250A
CU25003T-023	210mm	226mm		
CU25003T-025	225mm	241mm		
CU25003T-027	240mm	256mm		



Illustration (dimension) ▶



Part No.	Hole Spacing L1 (±2mm)	Total Length L2 (±2mm)	Add N Phase Terminal (±2mm)	Copper Busbar Size W: width (±2mm) T: thickness (±0.2mm)	Maximum Current (Max.)
CU25003T-005N	75mm	91mm	117mm	25W x 3T mm	250A
CU25003T-007N	90mm	106mm	132mm		
CU25003T-009N	105mm	121mm	147mm		
CU25003T-011N	120mm	136mm	162mm		
CU25003T-013N	135mm	151mm	177mm		
CU25003T-015N	150mm	166mm	192mm		
CU25003T-017N	165mm	181mm	207mm		
CU25003T-019N	180mm	196mm	222mm		
CU25003T-021N	195mm	211mm	237mm		
CU25003T-023N	210mm	226mm	252mm		
CU25003T-025N	225mm	241mm	267mm		
CU25003T-027N	240mm	256mm	282mm		